

GLEN DO Fenders

DO type fenders are improved products based on D type fenders, double wing installation, can be used under the most severe conditions.

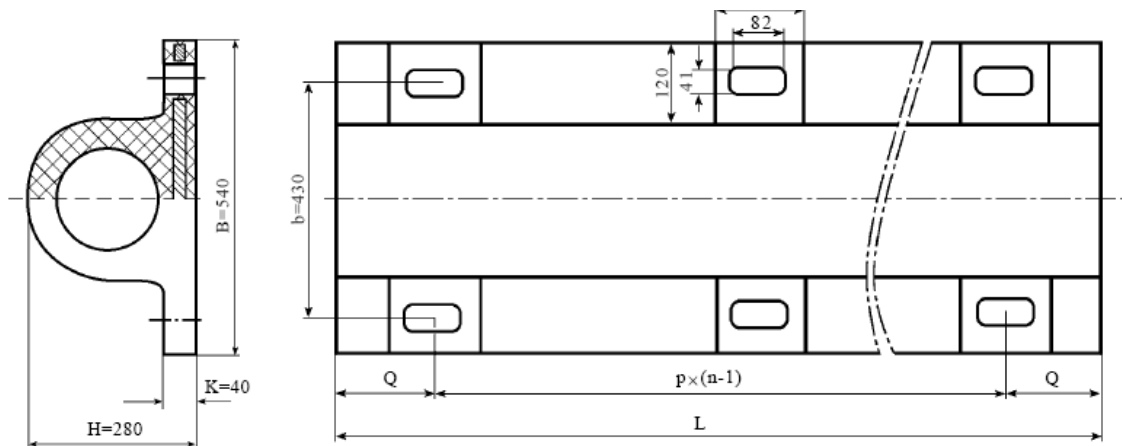
Features:

- Simple one-piece design
- Strong and hard wearing
- Easy installation

Applications:

- Jetties and wharves for small craft
- Workboat harbours
- General cargo
- Inland waterway

Specification for 280*540: (mm)



I Installation holes pitch

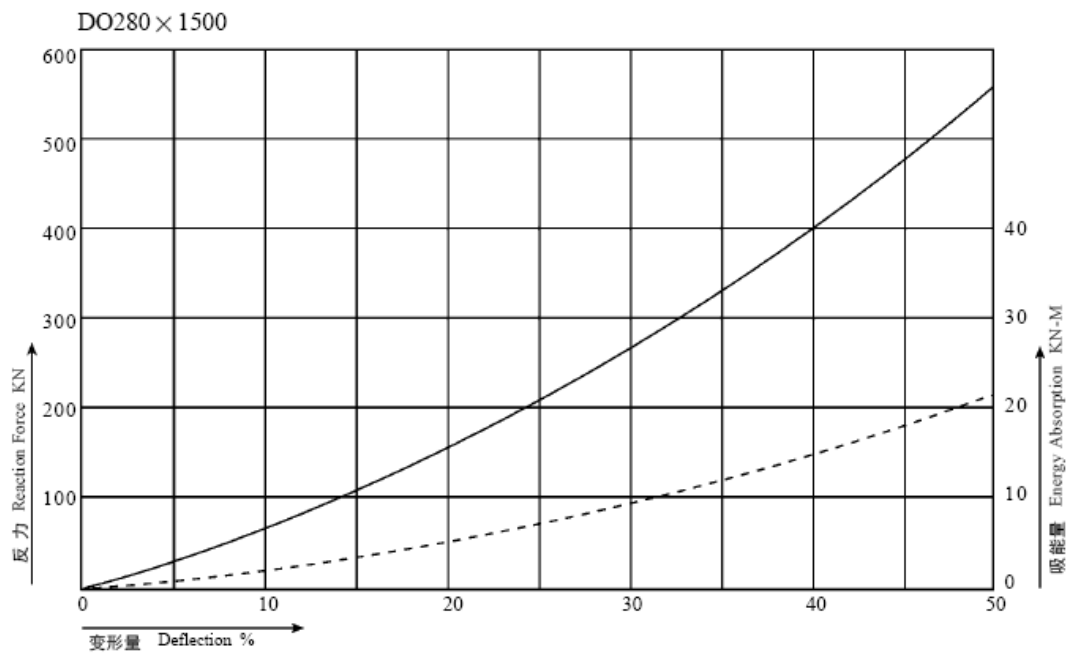
Type	L	Q	P	Bolt Holes
DO280*540*1000	1000	150	700	2
DO280*540*1500	1500	150	600	3
DO280*540*2000	2000	145	570	4
DO280*540*2500	2500	150	550	5
DO280*540*3000	3000	150	540	6



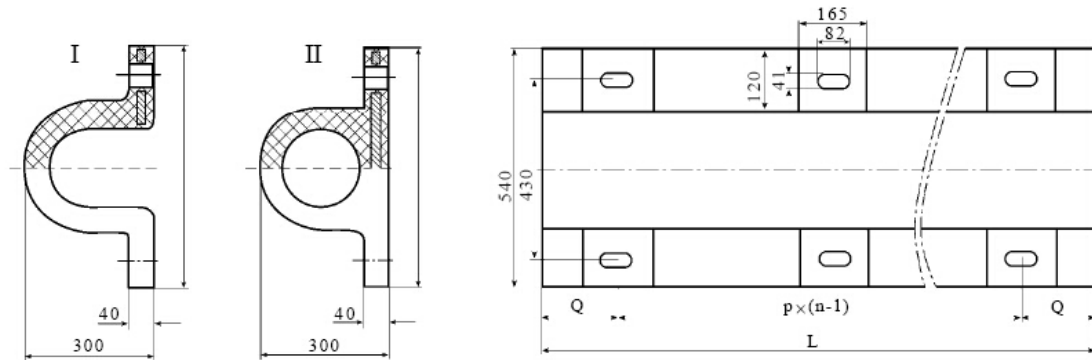
Performance Data:

Specification	Rated Compression Deflection (%)	Reaction Force (KN)	Energy Absorption (KN-M)	Tolerance (%)
D0280*540*1000	50	375	14	±10
D0280*540*1500		565	21	
D0280*540*2000		750	28	
D0280*540*2500		940	35	
D0280*540*3000		1130	42	

Performance Curve



Specification for 300*540 (mm)



Installation holes pitch

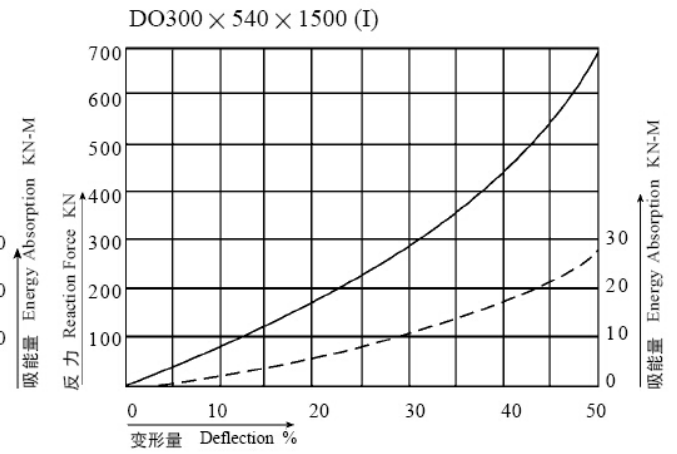
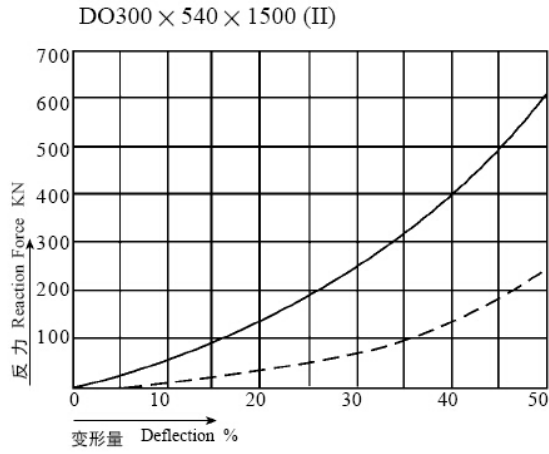
Type	L	Q	P	Bolt Holes
DO300*540*1000	1000	150	700	2
DO300*540*1500	1500	150	600	3
DO300*540*2000	2000	145	570	4
DO300*540*2500	2500	150	550	5
DO300*540*3000	3000	150	540	6

Performance Data

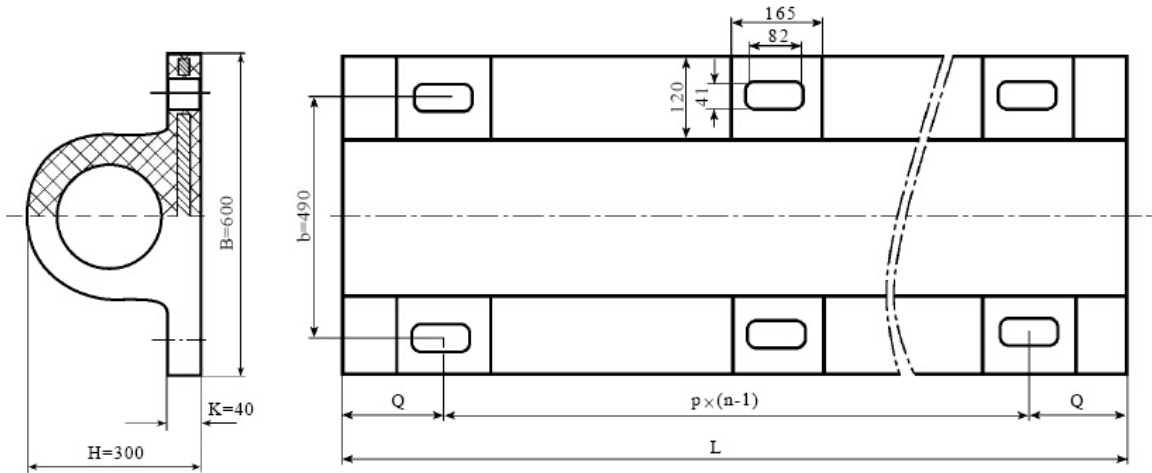
Specification	Rated Compression Deflection (%)	Reaction Force (KN)	Energy Absorption (KN-M)	Tolerance (%)
D0280*540*1000 (I)	50	450	18	± 10
D0280*540*1000 (II)		375	17	
D0280*540*1500 (I)		696	27	
D0280*540*1500 (II)		605	24	
D0280*540*2000 (I)		898	38	
D0280*540*2000 (II)		780	33	
D0280*540*2500 (I)		1120	45	
D0280*540*2500 (II)		974	39	
D0280*540*3000 (I)		1341	54	
D0280*540*3000 (II)		1166	47	



Performance Curve



Specification for 300*600 (mm)



Installation holes pitch

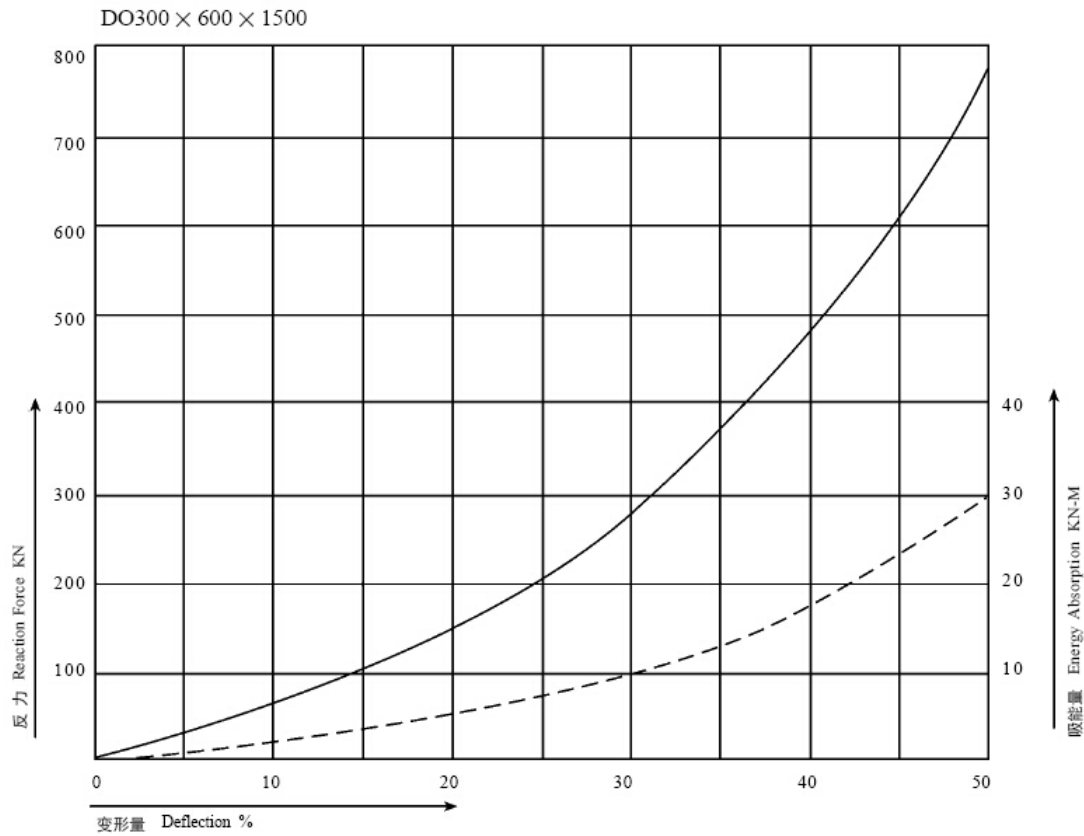
Type	L	Q	P	Bolt Holes
DO300 *600*1000	1000	150	700	2
DO300 *600*1500	1500	150	600	3
DO300 *600*2000	2000	145	570	4
DO300 *600*2500	2500	150	550	5
DO300 *600*3000	3000	150	540	6



Performance Data

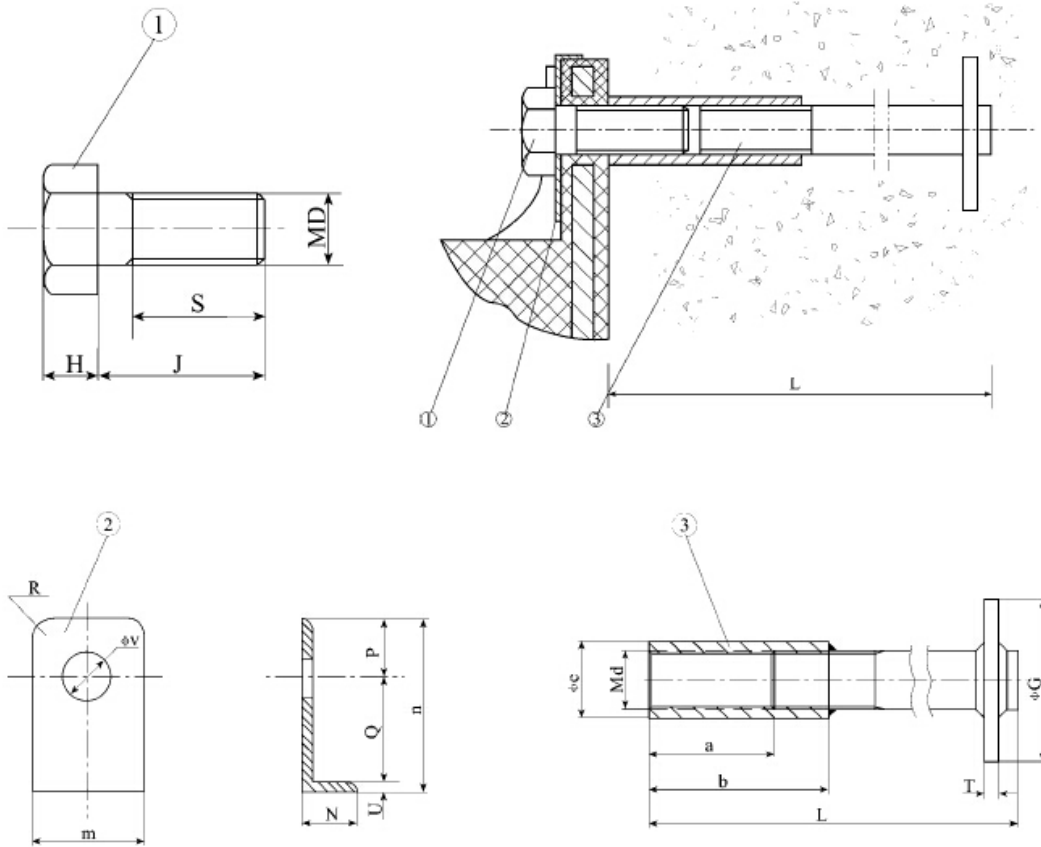
Specification	Rated Compression Deflection (%)	Reaction Force (KN)	Energy Absorption (KN-M)	Tolerance (%)
D0300*600*1000	50	495	20	±10
D0300*600*1500		765	30	
D0300*600*2000		989	39	
D0300*600*2500		1237	49	
D0300*600*3000		1484	59	

Performance Curve





Installation for DO type Fenders:



Bolt				Washer									Pre-built in nut					
D	J	S	H	m	n	N	u	V	Q	P	R	d	e	a	b	L	T	G
M36	95	80	23	119	126	22	6	43	58	62	25	M36	49	85	125	360	10-16	85
Q235 Hot-galv 1Cr13(2Cr13)1Cr18Ni9Ti, 0Cr17Ni12MO ₂				Q235 Hot-galv									1Cr13(2Cr13),1Cr18Ni9Ti,0Cr17Ni12MO ₂					